

“Resonance, Everything Touches Everything” - Six Australian Female Artists in Serbia

Curator Natalie McCarthy

Situated in the heart of Serbia, the city of Valjevo about the size of Wollongong will be hosting an Exhibition of six Australian female Artists in July 2012. *Anne Kwasner, Elyss McCleary, Natalie McCarthy, Carmen Reid, Tania Smith and Mignon Steele's* work will be exhibited at the **International Art Studio Radovan Mica Trnavac** as part of their Summer Cultural program. Some of the artists will also go over to stay as part of a residency the Studio offers exhibiting Artists. The opportunity came about with an invitation for the curator Natalie McCarthy to return to Valjevo with a group of female artists after holding a solo show there in May last year.

The International Art Studio was set up in 1997 by Trnavac, who resides in Belgrade, in his hometown Valjevo as a vehicle for cultural exchange for the Serbian people. Built on the foundation that as the most popular profound form of spiritual activity, art has the capacity of communicating with the entire world in a universal language. So far they have exhibited over 160 Artists with origins from America, Australia, Mexico, Turkey, Greece, Japan and Poland to name a few. McCarthy says of her experience in 2011 “Art and culture is deeply ingrained in the Serbian lifestyle. It was very refreshing to experience, as was their openness and enthusiasm to learn about other cultures. They were wonderful hosts with generous hearts and I now consider them friends. I am looking forward to bringing the show over and sharing a similar experience with the artists that are able to join me. She goes on to talk about the show “The exhibition was designed to demonstrate the diverse approach artists use to explore ideas, evident in the array of styles “Resonance” has to offer its audience. Each artist has consciously participated in the positive act of making art to communicate the human experience. This being the inspiration for the show’s title “Resonance, Everything Touches Everything.”

Connected through their art practice, having studied together or involved in cross-projects McCleary, Reid and Smith work out of Melbourne. Kwasner and McCarthy are based in the Sydney Region and Steele is a local resident of Wollongong. Themes include contemporary interpretations of landscape, environment and the figure. Using the mediums of video performance, drawing, 3D installation and painting, the work is underpinned with a strong practise of mark making and a common aesthetic for the appreciation of beauty. The intimate quality of the work prevails from the ability of the artist to engage the imagination in response to a world that is in a state of constant flux and chaos.

The show will be featured on the **International Art Studio Radovan Mica Trnavac's** Website in the July

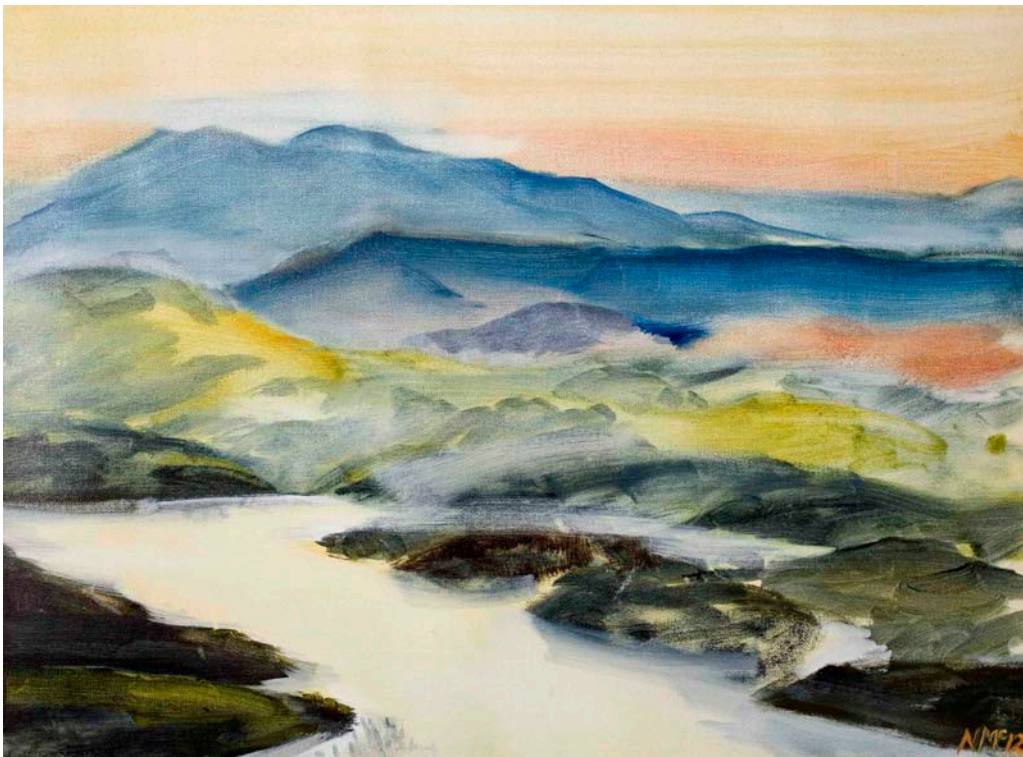
<http://www.ius-trnavac.org>

For more information contact Natalie McCarthy **M** 0401309119 **E** nat@nataliemccarthy.com **W** www.nataliemccarthy.com



Anne Kwasner *"Lost Souls"*

W: <http://annekwasner.com>



Natalie McCarthy *View From McMahon's Lookout- Blue Mountains*

W: <http://www.nataliemccarthy.com>



Elyss McCleary *The Etched Pinks*

W: <http://www.elyssmcclary.blogspot.com.au/>



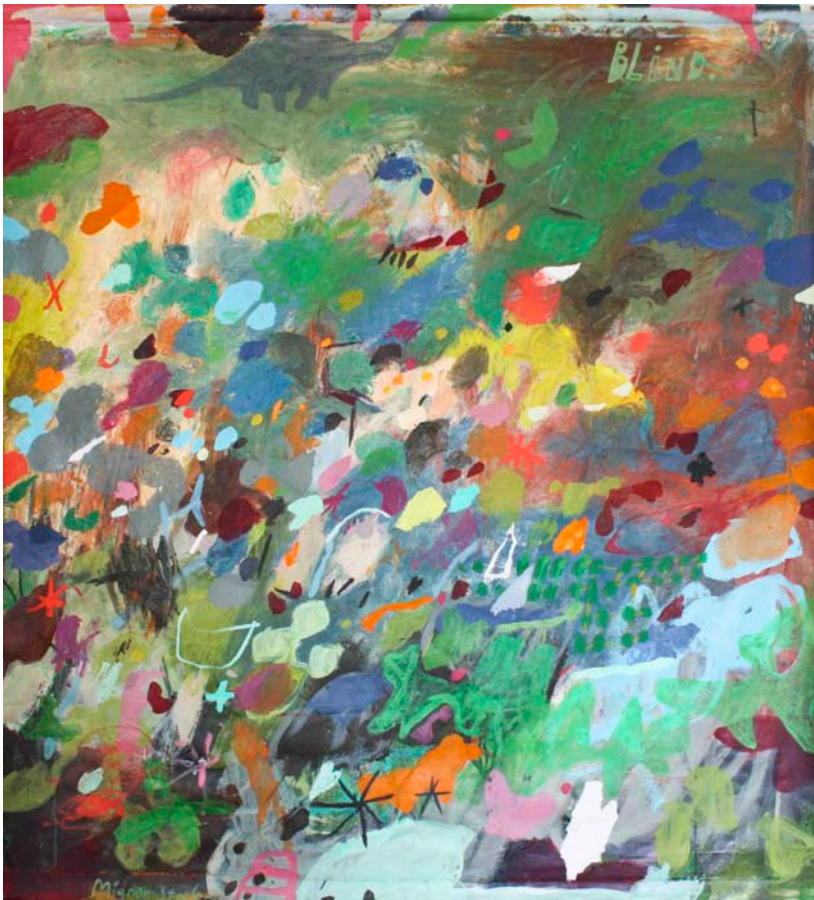
Carmen Reid *Sentinels*

W: <http://westspace.org.au/calendar/event/flits-figments-and-fabrication/>



Tania Smith *Pink Still-Untitled #5*

W: www.tanialousmith.com



Mignon Steele *Blind*

W: <http://www.barnaclestudio.com.au/PAINTINGS>